



DrewWild **Europe!**



For The Native European Peoples, Their
Indigenous Cultures & Future Generations

The Native European Peoples, The Celtic, Germanic, Nordic,
Baltic, Slavic, Italic & Grecian peoples, are some of the smallest
ethnic minorities on the globe and they also have one of the
smallest indigenous sacred homelands.



By Drew Rouse  www.drewrouse.com





An Ecological Network Of Interconnecting ✧ Wildlife Corridors Across Europe. ✧

-To connect parks, public & private “protected lands”, with a series of contiguous & continuous green belts or wildlife corridors to form an Eco-Net which will allowing wildlife to migrate, forage and move more freely across Europe & greater Eurasia.

✧ -Parks, preserves, protected areas & green spaces are usually isolated ecological islands that will be more viable, thus more valuable, as habitat for wildlife when they are interconnected to each other.

-These corridors can utilise existing trail systems, parks, out of use private or public farm lanes or narrow reforested portions of fields, thickened tree lines, wood lots, banks of rivers, ponds & lakes, marshes, designated portions of government lands, conservation lands, etc. As well as city, regional, provincial federal parks & military bases... etc... etc.





Mapping Out & Interconnecting A Network/ Eco-Net Of Wildlife Corridors Across Europe



- ◆ Map out Existing European Wildlife Corridors, Parks, Green-Belts, Reserve Areas, private and public Green Spaces... etc.
- ◆ Map out new potential interconnecting corridors or green-belts to further connect existing parks, habitats etc.
- ◆ Lobby European governments to buy/purchase lands to Re-Wild & interconnect.
- ◆ Replant Beech Forests & indigenous flora & build wildlife corridors over roads, highways, train tracks, around or through cities etc.
- ◆ Repopulate these Re-Wilded areas with more indigenous/native forests, flora & fauna, including the large predators and large herbivores.
- ◆ Create an interconnecting trail system for hiking, horseback riding hunting... etc. But not for motorised uses that disturb wildlife & creates linear tracks...etc.





End All Migration, Colonisation & Repopulation & ReWilding Europe

- ◆ We all know that less people is better for the environment. So all migration/colonisation into Europe must end & migrants return home. We can help them there.
- ◆ Wild lands means better air & drinking-water quality plus better lifestyle for the Native European peoples and visitors/tourists.
- ◆ Offering Native European peoples more opportunities to harvest & eat their traditional wild foods & pick wild medicines which will help to rebuild & reestablish their connection to their indigenous lands & to their ancient cultures & ancestors.
- ◆ Preservation of wild lands, its endangered indigenous Flora & Fauna & The Native European peoples cultures for future generations to come... is our goal.
- ◆ The money/taxes spent on the repopulation of Europe is much better spent on ReWilding Europe & preserving its Native species & Native European Cultures!



ReWild Europe & Preserve The Native European Flora & Fauna

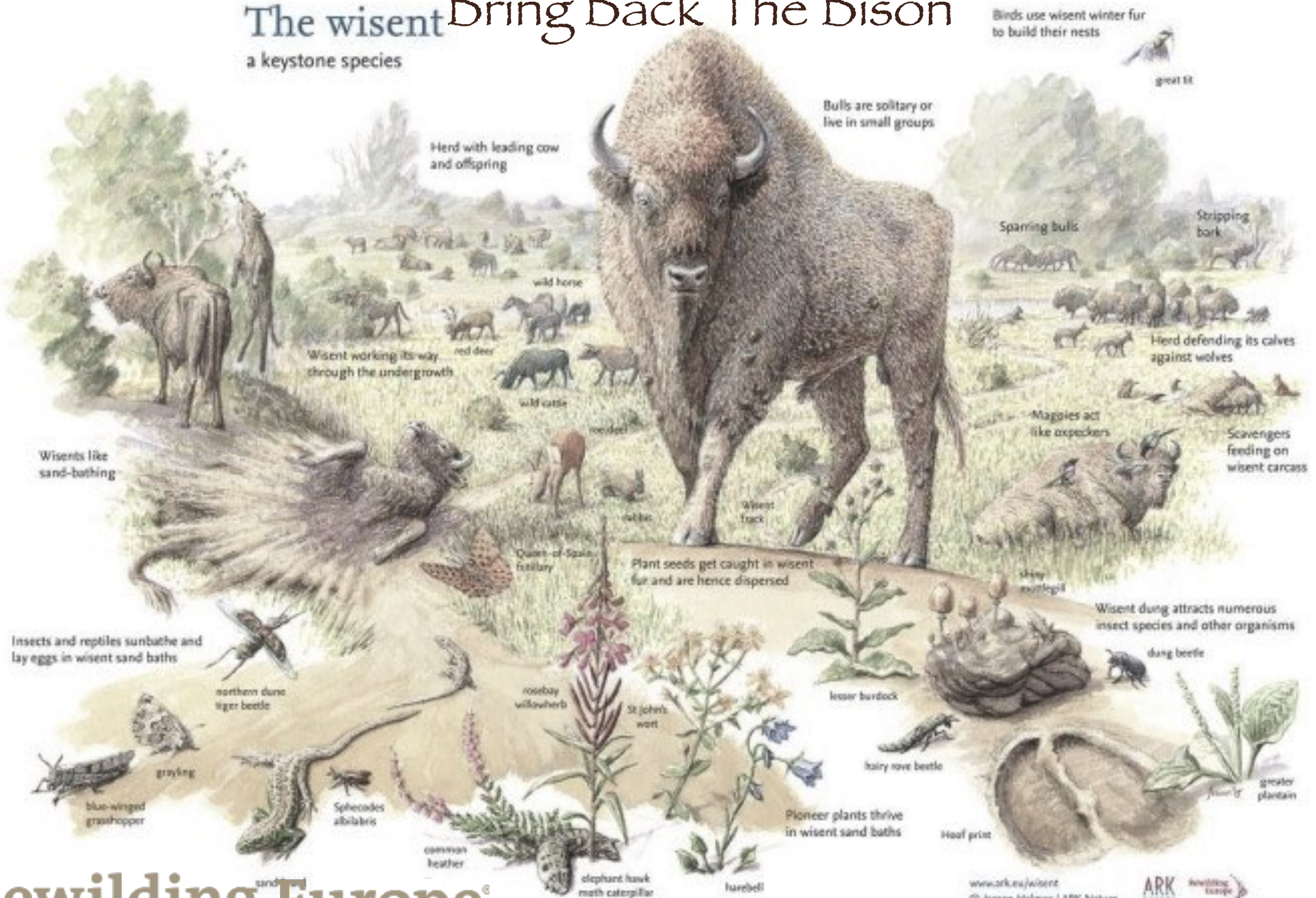




Replant The Magical Beech Forests



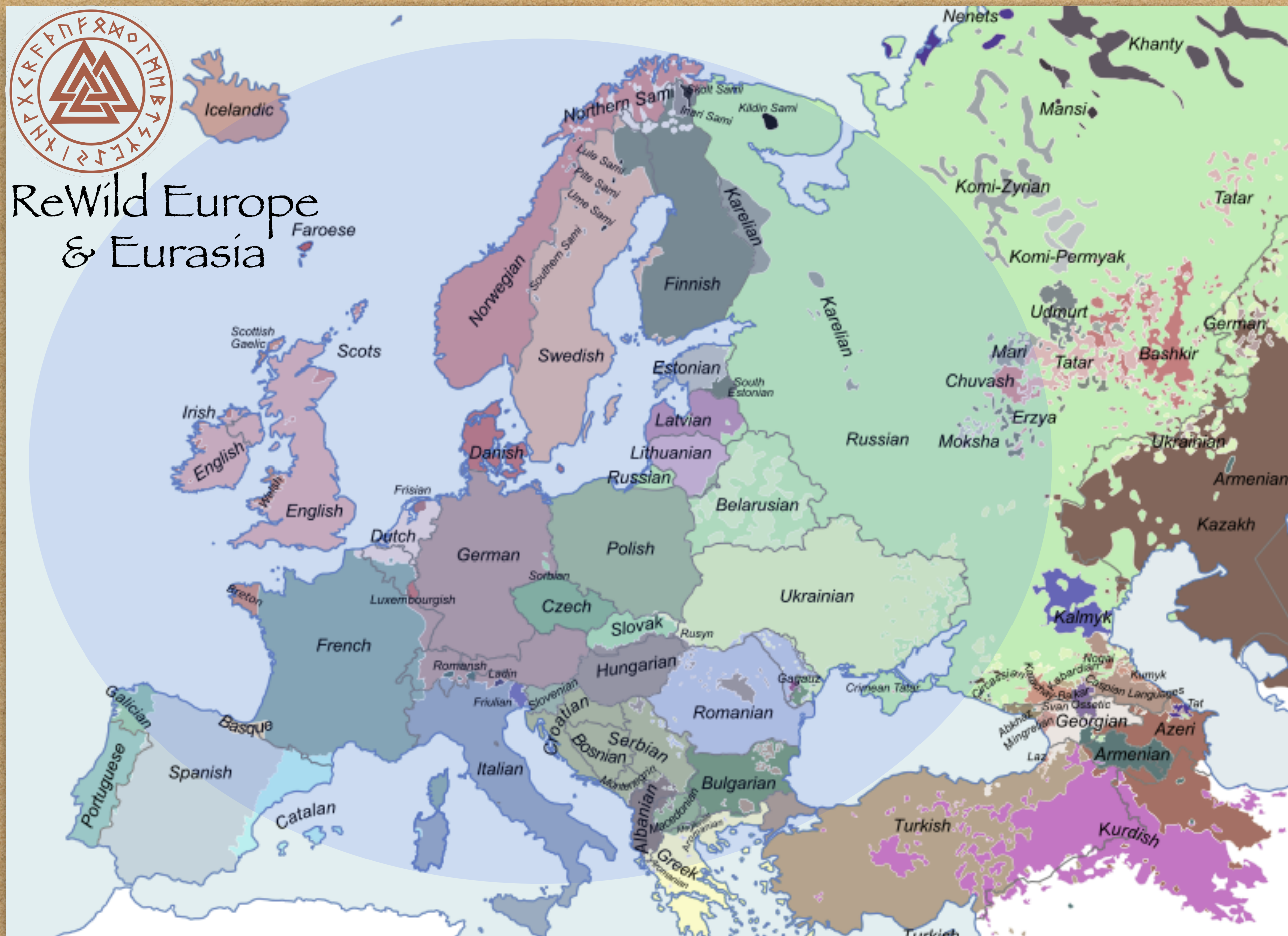
The wisent Bring Back The Bison a keystone species



Rewilding Europe®

www.ark.eu/wisent
© Jeroen Helmer / ARK Nature

ARK
Rewilding Europe



Ancient Old Growth Beech Forest Range



Rewilding Europe®



It's Time To ReWild Europe For
The Native Flora & Fauna &
To Preserve The Indigenous/
Native European Peoples
Indigenous Cultures For

FUTURE GENERATIONS!



Eco-ducts, Wildlife-Bridges & Wildlife Corridors Interconnecting Habitats, Parks & Green Zones

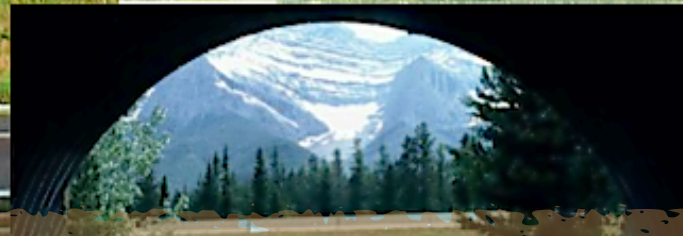
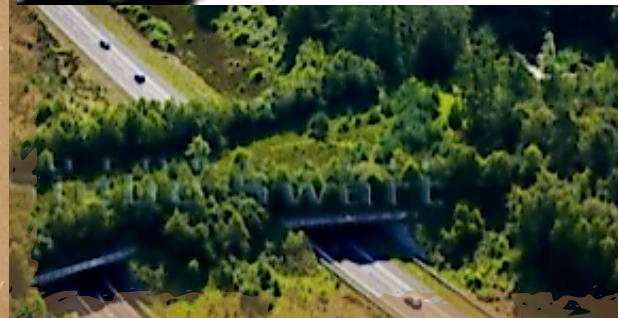
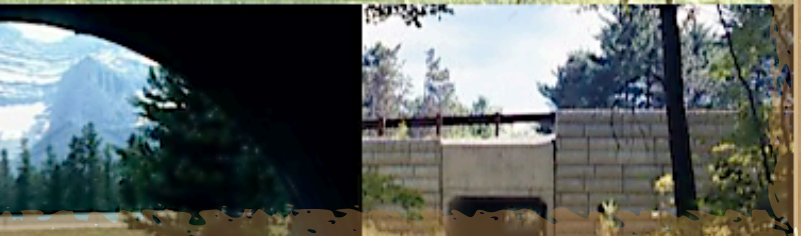
reWILD Europe



"Ecoduct" Bridge in the Netherlands to



let wild life cross the highway safely!





Eco-Logical-Netwok

The Nations of Romania, Serbia, Bulgaria, Moldavia
& the Ukraine already have a large interconnecting
Eco-Logical-Network.



Corridor through five countries!



European
greenbelt



The European
Greenbelt already
extends through 16
European Nations!



European
greenbelt

These lands could be
easily ReWilded with
Beech forests & other
Native Flora & Fauna
introduced.

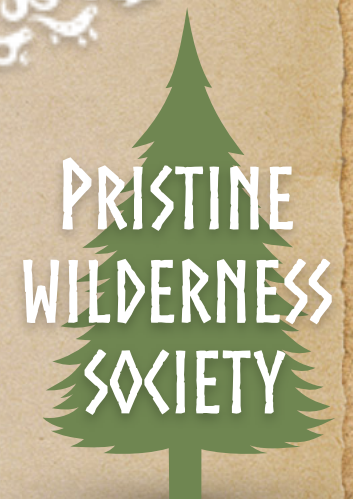


Eco-Logical-Network

Potential Partners & Information



Rewilding
Europe®



<http://www.iene.info>



Rewilding
Europe®



For Future Native European Generations